


KINGSFORD

Front Yard Packages





Introduction

As part of the ongoing development of Kingsford, Okeland offers all residential land purchasers a front garden landscape starter package. This initiative demonstrates Okeland's commitment to its residents and to the quality of the development at Kingsford.

The landscape package is designed to assist our new residents to establish the basics such as irrigation, turf and planting to their front garden and serves to immediately improve the visual amenity of the streetscape of Kingsford. The landscape package will be managed by an approved landscape contractor selected by Okeland, who will assist you in the design and landscaping of your front garden.

The purpose of this information pack is to provide you with some ideas and inspiration to help you start thinking about how you would like your front garden to look.

Water Wise Gardens

All gardens designed and built as part of the landscape package will be water wise. The design of the landscape and irrigation will use water wise principles as set out in Water Corporation's water wise garden scheme. The aim of the scheme is to reduce consumption of our precious drinking water reserves, particularly on gardens, while at the same time providing an attractive landscape treatment.

There are a number of water wise solutions recommended at Kingsford to help reduce the amount of water used on the garden. They include the use of specific water wise plant species, water wise irrigation, thick mulch layers and other water wise techniques.

Scope of Works

The landscape rebate works will typically consist of the installation of an irrigation system and controller to the Water Authority requirements, garden planting, installation of turf and the installation of a Council approved street tree to the verge immediately fronting your property.


Any additional works beyond the front garden package may be organised directly with the landscape contractor at an additional cost to the purchaser.



KINGSFORD



OEKLAND CORPORATION



How you can assist in reducing water consumption in your front yard

At Kingsford all residents will be encouraged to minimise water consumption in their gardens. There are a number of water saving design ideas that should be taken into consideration when planning your own garden.

- | | |
|----------------|---|
| lawn: | requires large volumes of water. Therefore, when designing your garden take special consideration of the area required. The size of the lawn will depend on the function and overall garden appearance. |
| plant species: | all plants listed in the plant species list have been chosen because they are water wise and predominantly native. |
| weather: | it is important to monitor the seasonal weather conditions and change your watering system accordingly. |
| planting: | it is more efficient to water plants that are densely planted and grouped according to similar watering requirements than plants that are sparsely spaced. |
| mulch: | a minimum thickness of 50mm applied to garden beds reduces the evaporative loss from the soil surface, improves the soil organic matter as it breaks down and suppresses weed growth. |
| irrigation: | the water system that will be installed for you will be efficient, flexible and designed in accordance with the Water Corporation's specifications. |



“Australian Native” Garden Style

This garden style is typically informal and rustic. It should utilise a planting palette of native Western Australian plants, especially those that are endemic to the greater Bullsbrook region providing habitat for local fauna.

The garden should incorporate curved planting beds and gravel paths - material selection to reference the local area. Choose native plant species of contrasting height, form, texture and colour and explore mass planting of similar species. Choosing to have minimal turf will help to keep your garden low maintenance and water-wise.

Suggested Plant Species palette

Groundcovers and Small Shrubs

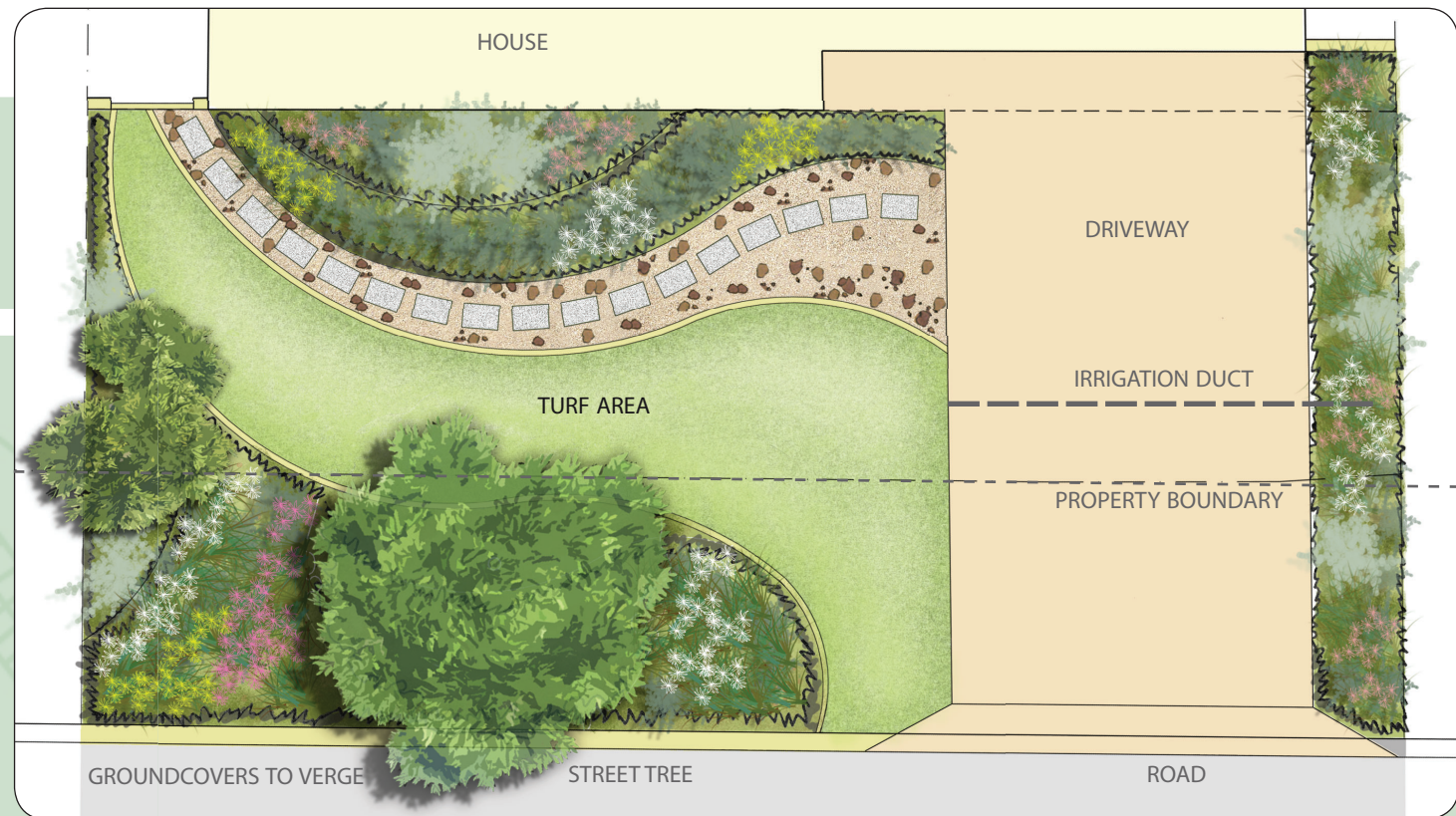
Beaufortia 'Summer Flame'	Summer Flame
Conospermum cressinervium	Summer Smoke Bush
Conostylis candicans	Grey Cotton Head
Eremophila nivea	Silky Emu bush
Grevillea saccata 'Starburst'	Starburst Grevillea
Grevillea 'Sea Spray'	Sea Spray grevillea
Kunzea pulchella	(grey leaf form)
Orthrosanthus multiflorus	Morning Iris
Pimelea ferruginea	Rice Flower
Thyptomene baeckeacea	Kalbarri Cascade
Verticordia chrysanthella	Feather Flower

Large Shrubs

Beaufortia squarrosa	Sand Bottlebrush
Hakea bucculenta	Red Pokers
Leucophyta brownii	Cushion Bush
Westringia fruticosa	Coastal Rosemary

Trees

Corymbia eximia	Yellow Bloodwood
Corymbia ficifolia	Red Flowering Gum
Eucalyptus vitricx	Little Ghost Gum
Xanthorrhoea preissii	Grass Trees



Australian Native Garden Style Ideas

“Australian Native” Garden Style (Corner Lot)

This garden style is typically informal and rustic. It should utilise a planting palette of native Western Australian plants, especially those that are endemic to the greater Bullsbrook region providing habitat for local fauna.

The garden should incorporate curved planting beds and gravel paths - material selection to reference the local area. Choose native plant species of contrasting height, form, texture and colour and explore mass planting of similar species. Choosing to have minimal turf will help to keep your garden low maintenance and water-wise.

Suggested Plant Species palette

Groundcovers and Small Shrubs

Beaufortia 'Summer Flame'	Summer Flame
Conospermum cressinervium	Summer Smoke Bush
Conostylis candicans	Grey Cotton Head
Eremophila nivea	Silky Emu bush
Grevillea saccata 'Starburst'	Starburst Grevillea
Grevillea 'Sea Spray'	Sea Spray grevillea
Kunzea pulchella	(grey leaf form)
Orthrosanthus multiflorus	Morning Iris
Pimelea ferruginea	Rice Flower
Thyptomene baeckeacea	Kalbarri Cascade
Verticordia chrysanthella	Feather Flower

Large Shrubs

Beaufortia squarrosa	Sand Bottlebrush
Hakea bucculenta	Red Pokers
Leucophyta brownii	Cushion Bush
Westringia fruticosa	Coastal Rosemary

Trees

Corymbia eximia	Yellow Bloodwood
Corymbia ficifolia	Red Flowering Gum
Eucalyptus victrix	Little Ghost Gum
Xanthorrhoea preissii	Grass Trees

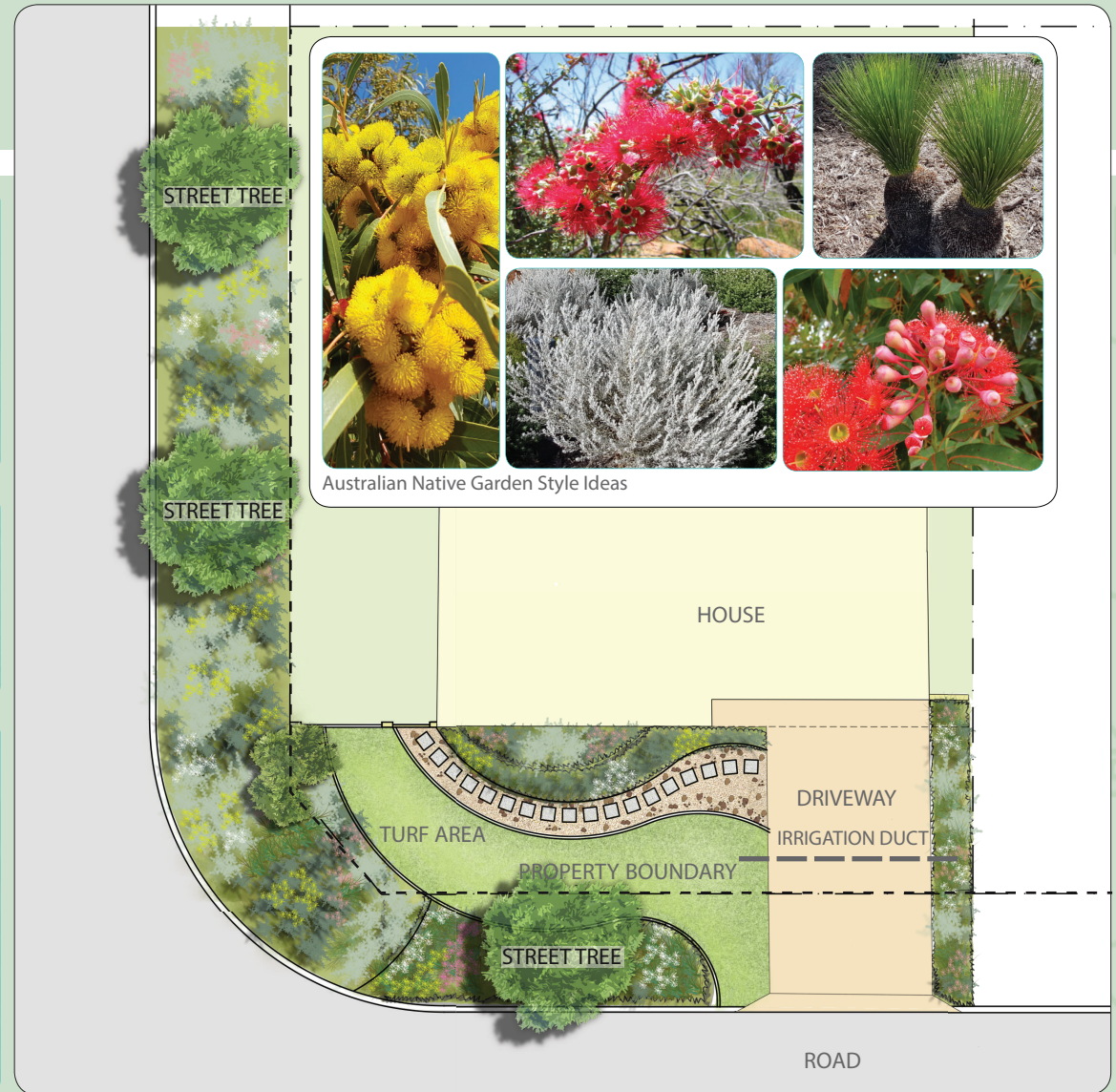


STREET TREE

STREET TREE



Australian Native Garden Style Ideas



“Contemporary / Modern” Garden Style

The concept behind this garden is simplicity, incorporating strong bold geometric shapes with a minimal planting palette for a dramatic effect.

Choose bold sculptural & structural plants including succulents such as Agave, Dracaena and Yuccas. These can be used to highlight architectural elements and colour scheme of your home and define entries and spaces. Explore planting feature species in pots. Explore using spreading ground covers and shrubs next to feature paving for a range of colour and texture. These will also complement feature species when planted together. Native grasses are great for adding colour and texture along driveways or fences.

Suggested Plant Species Palette

Groundcovers and Small Shrubs

Adenanthos cuneatus	Coral Carpet
Conospermum cressinervium	Summer Smoke Bush
Grevillea 'Gin Gin Gem'	Gin Gin Gem Grevillea
Orthrosanthus multiflorus	Morning Iris
Rosmarinus officinalis	Rosemary

Strappy Leaf Shrubs

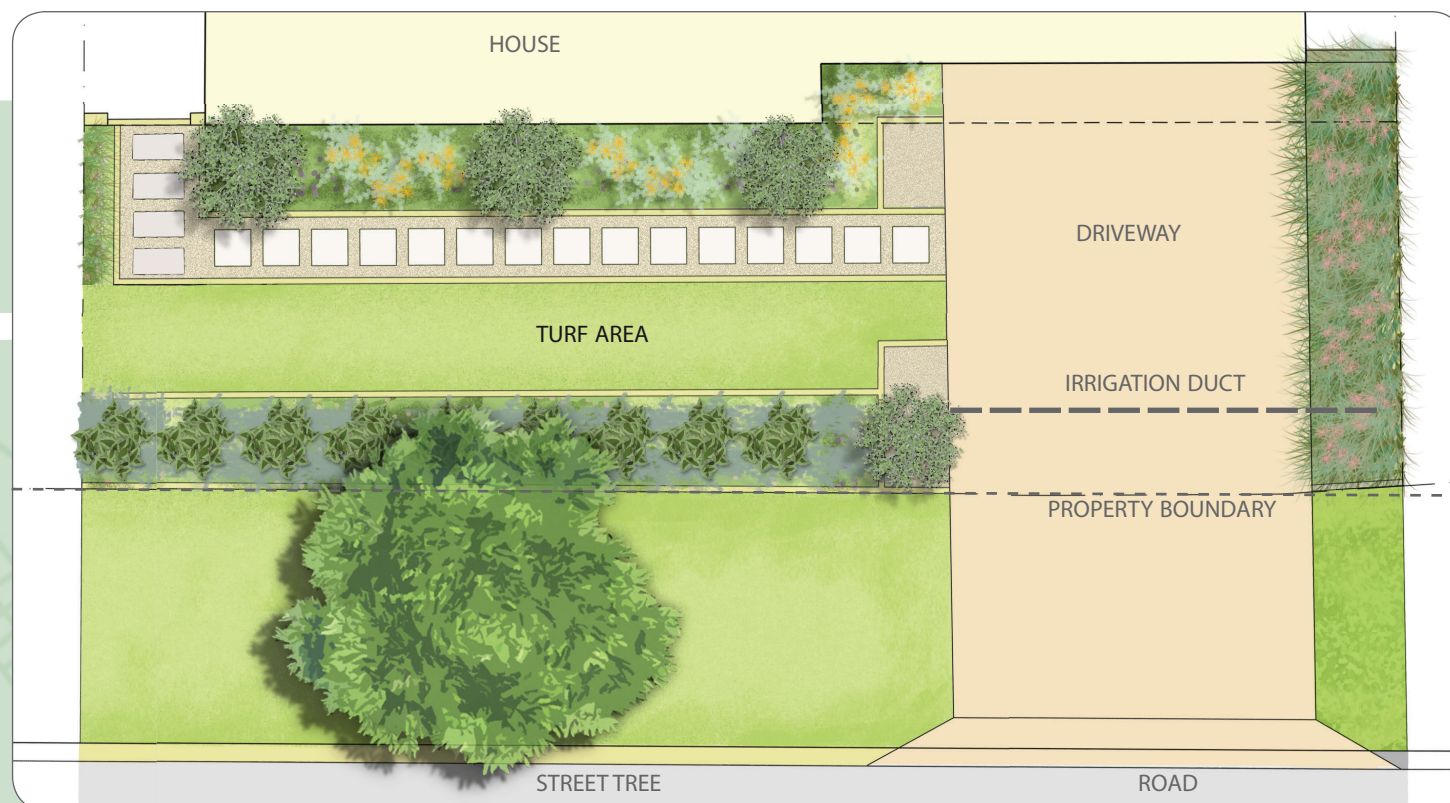
Lomandra longifolia	Mat Rush
Ficinia nodosa	

Feature Plants

Agave attenuata	Huntington Blue
Aeonium arboreum	Tree Aeonium
Cotyledon orbiculata	Silver Shadow
Dracaena	Black knight
Dracaena	Golden Dragon
Kalanchoe orgyalis	Copper Spoons
Magnolia grandiflora	Little Gem
Yucca	Lemon Drop

Trees

Corymbia eximia	Yellow Bloodwood
Corymbia ficifolia	Red Flowering Gum
Eucalyptus vitrix	Little Ghost Gum



Contemporary Garden Style Ideas

“Contemporary / Modern” Garden Style (Corner Lot)

The concept behind this garden is simplicity, incorporating strong bold geometric shapes with a minimal planting palette for a dramatic effect.

Choose bold sculptural & structural plants including succulents such as Agave, Draceana and Yuccas. These can be used to highlight architectural elements and colour scheme of your home and define entries and spaces. Explore planting feature species in pots. Explore using spreading ground covers and shrubs next to feature paving for a range of colour and texture. These will also complement feature species when planted together. Native grasses are great for adding colour and texture along driveways or fences.

Suggested Plant Species Palette

Groundcovers and Small Shrubs

Adenanthos cuneatus	Coral Carpet
Conospermum cressinervium	Summer Smoke Bush
Grevillea 'Gin Gin Gem'	Gin Gin Gem Grevillea
Orthrosanthus multiflorus	Morning Iris
Rosmarinus officinalis	Rosemary

Strappy Leaf Shrubs

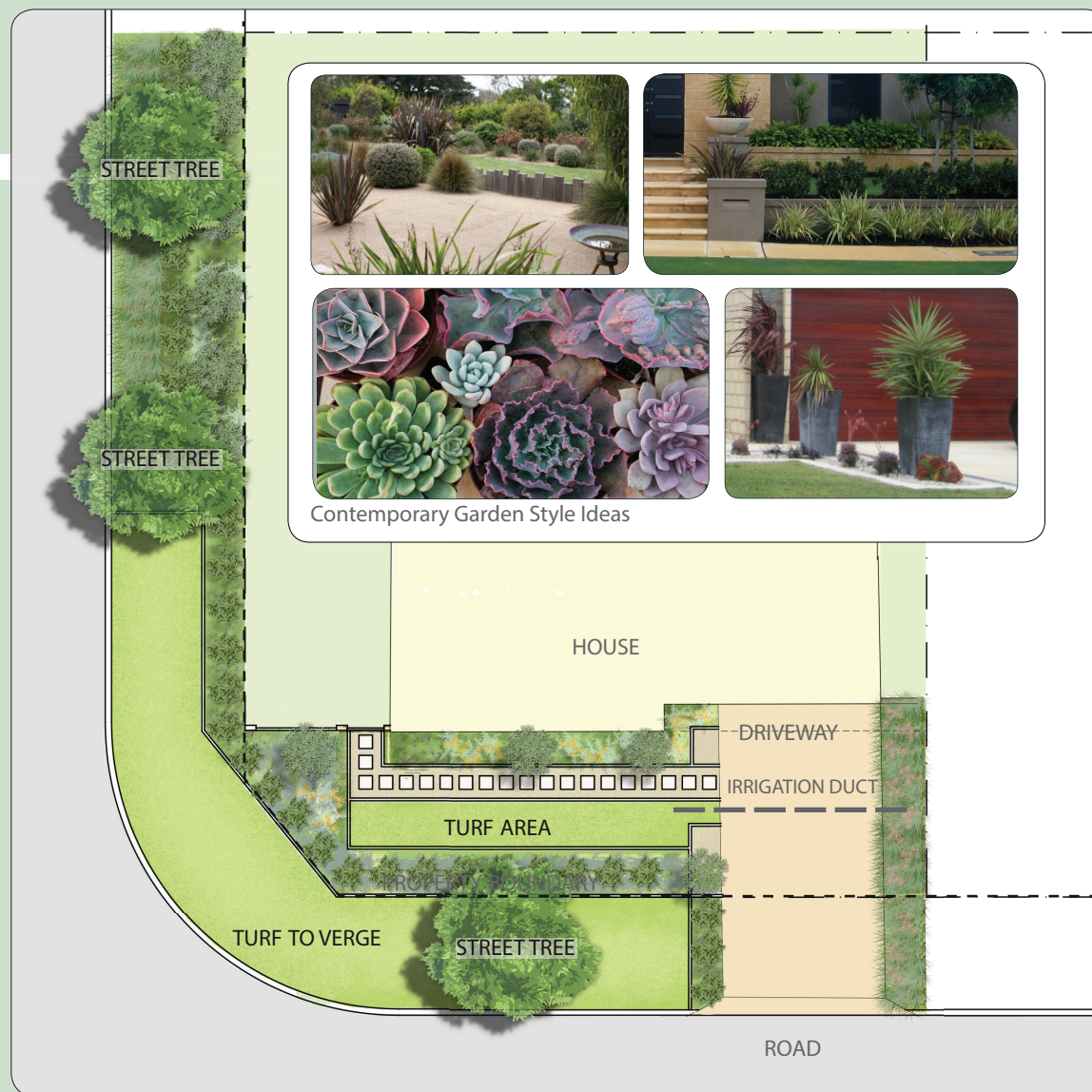
Lomandra longifolia	Mat Rush
Ficinia nodosa	

Feature Plants

Agave attenuata	Huntington Blue
Aeonium arboreum	Tree Aeonium
Cotyledon orbiculata	Silver Shadow
Dracaena	Black knight
Dracaena	Golden Dragon
Kalanchoe orgyalis	Copper Spoons
Magnolia grandiflora	Little Gem
Yucca	Lemon Drop

Trees

Corymbia eximia	Yellow Bloodwood
Corymbia ficifolia	Red Flowering Gum
Eucalyptus vitrix	Little Ghost Gum



“Cottage / Edible” Garden Style

Connecting Kingsford to the region's historic food bowl production, this style of garden is colourful and fun as well as personal and embracing, perfect for smaller lots. To achieve an informal look, avoid planting in straight lines or defined patterns. Usually defined by the use of traditional materials, dense planting, and a mixture of ornamental and edible plants. Experiment with a variety of native, exotic (climate appropriate) and edible species that offer different colours, textures and forms and aim for 4 seasons of colour. Selecting plants of contrasting shape and size will give you a multi-layered tapestry of foliage.

Suggested Plant Species palette

Groundcovers and Small Shrubs:

Beaufortia 'Summer Flame'	Summer Flame
Conospermum cressinervium	Summer Smoke Bush
Conostylis candicans	Grey Cotton Heads
Dampiera errocephala	
Eremophila nivea	Silky Emu Bush
Grevillea saccata 'Starburst'	Starburst Grevillea
Isopogen latifolius	Stirling Range Cone Flower
Thyptomene baeckeacea	Kalbarri Cascade
Verticordia monadelpha	Pink Woolly Featherflower

Large Shrubs:

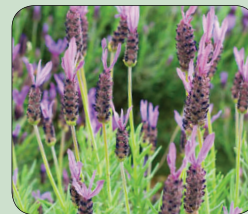
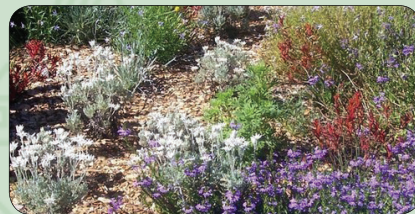
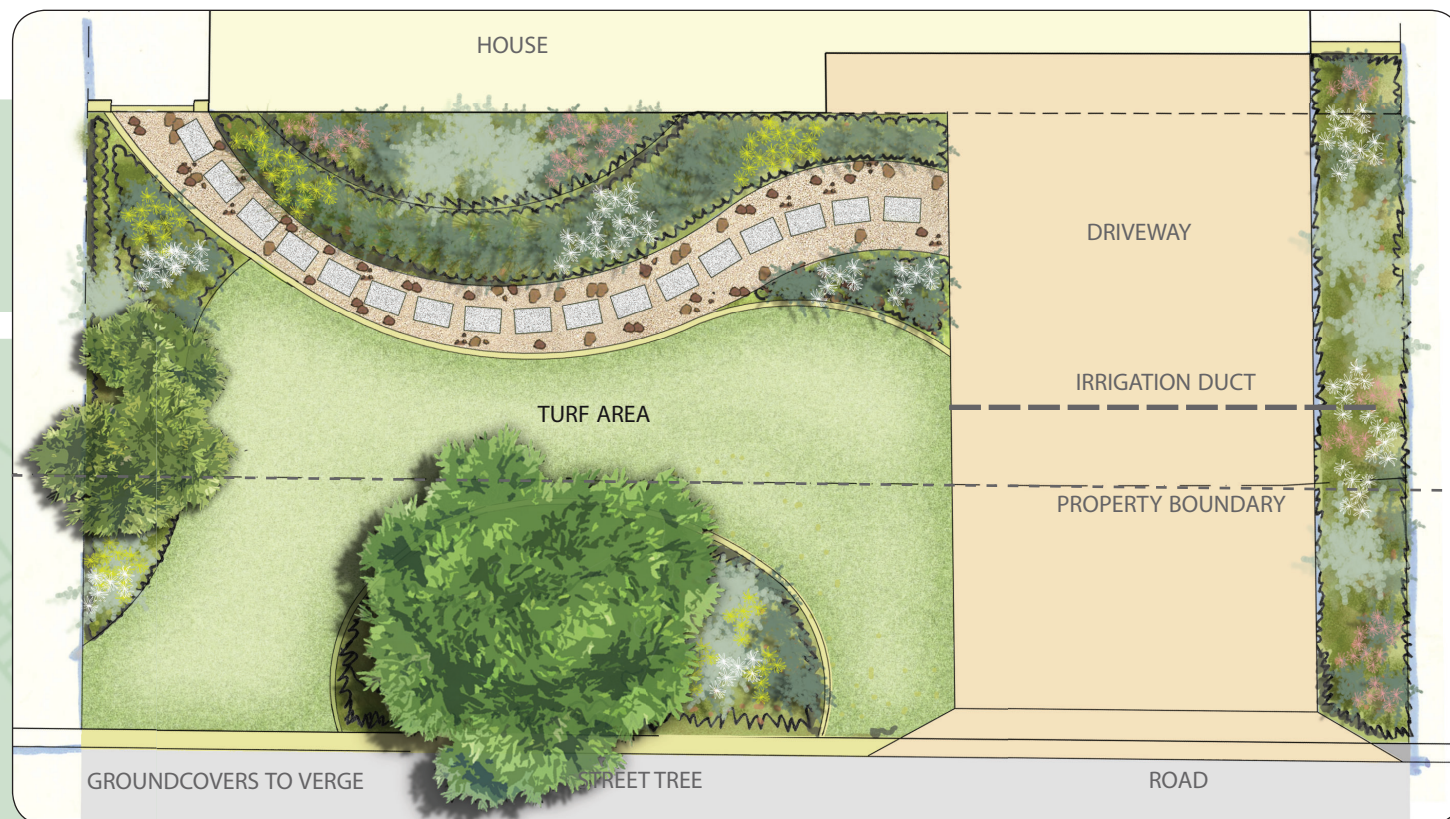
Beaufortia squarrosa	Sand Bottlebrush
Hakea bucculenta	Red Pokers
Leucophyta brownii	Cushion Bush
Westringia fruticosa	Coastal Rosemary

Small Trees:

Eucalyptus erthrocorys	Red Capped Gum
Eucalyptus preissiana	Bell Fruited Mallee
Olea europaea	Olive
Citrus limon	Lemon

Herbs:

Lavandula angustifolia	Lavendar
Rosmarinus officinalis	Rosemary
Salvia officinalis	Sage
Thymus vulgaris	Thyme



Cottage / Edible Style Ideas

“Cottage / Edible” Garden Style

Connecting Kingsford to the region's historic food bowl production, this style of garden is colourful and fun as well as personal and embracing, perfect for smaller lots. To achieve an informal look, avoid planting in straight lines or defined patterns. Usually defined by the use of traditional materials, dense planting, and a mixture of ornamental and edible plants. Experiment with a variety of native, exotic (climate appropriate) and edible species that offer different colours, textures and forms and aim for 4 seasons of colour. Selecting plants of contrasting shape and size will give you a multi-layered tapestry of foliage.

Suggested Plant Species palette

Groundcovers and Small Shrubs:

Beaufortia 'Summer Flame'	Summer Flame
Conospermum cressinervium	Summer Smoke Bush
Conostylis candicans	Grey Cotton Heads
Dampiera errocephala	
Eremophila nivea	Silky Emu Bush
Grevillea saccata 'Starburst'	Starburst Grevillea
Isopogen latifolius	Stirling Range Cone Flower
Thyptomene baeckeacea	Kalbarri Cascade
Verticordia monadelph	Pink Woolly Featherflower

Large Shrubs:

Beaufortia squarrosa	Sand Bottlebrush
Hakea bucculenta	Red Pokers
Leucophyta brownii	Cushion Bush
Westringia fruticosa	Coastal Rosemary

Small Trees:

Eucalyptus erthrocorys	Red Capped Gum
Eucalyptus preissiana	Bell Fruited Mallee
Olea europaea	Olive
Citrus limon	Lemon

Herbs:

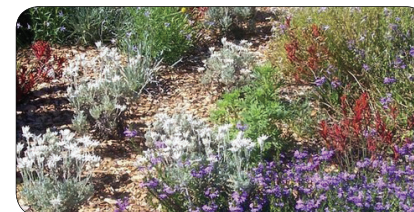
Lavandula angustifolia	Lavendar
Rosmarinus officinalis	Rosemary
Salvia officinalis	Sage
Thymus vulgaris	Thyme



STREET TREE

GROUNDCOVERS
TO VERGE

STREET TREE



Cottage / Edible Style Ideas

