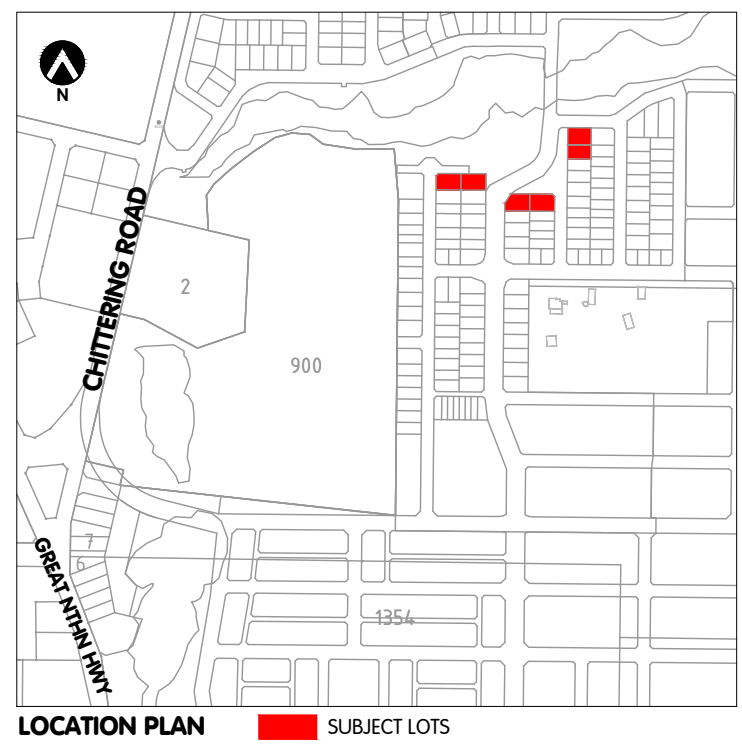


The development guidelines as shown have been adopted by Council and signed by the Principal Planner.

Principal Planner/ Co-ordinator Statutory Planning

Date CoS Ref:

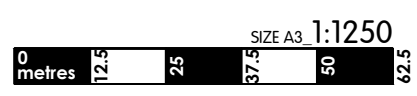
- LEGEND**
- LDP BOUNDARY
 - PROPOSED LOT BOUNDARY
 - 1012 EXISTING LOT NUMBERS
 - EXISTING BUILDINGS
 - DESIGNATED GARAGE LOCATION
 - BUILDING ORIENTATION
 - BIN PAD LOCATION
 - 3m PRIMARY STREET SETBACK



HATCH | RobertsDay

SUBDIVISION STAGE 3 LOCAL DEVELOPMENT PLAN

Kingsford Estate
City of Swan



E	LDP AREA AND SETBACKS	220127	SJ	TP
D	MINOR AMENDMENTS	220107	NR	AB
C	BIN PADS	211122	NR	AB
B	STAGE 3	211116	NR	AB
A	FOR COMMENT	210929	NR	AB
YYMMDD	DESCRIPTION	REV	DRAWN	APPR'D

REF NO. **AMX BUL** DRAW NO. **RD1 408** REV. **E**